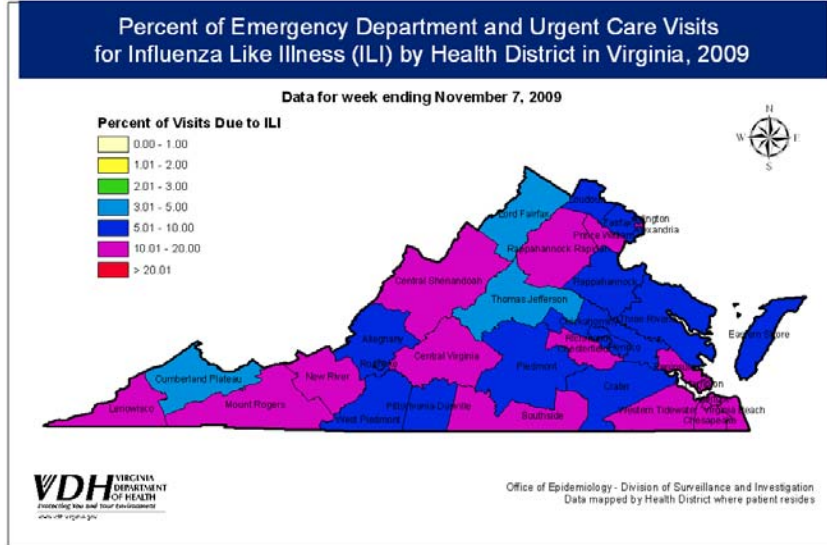
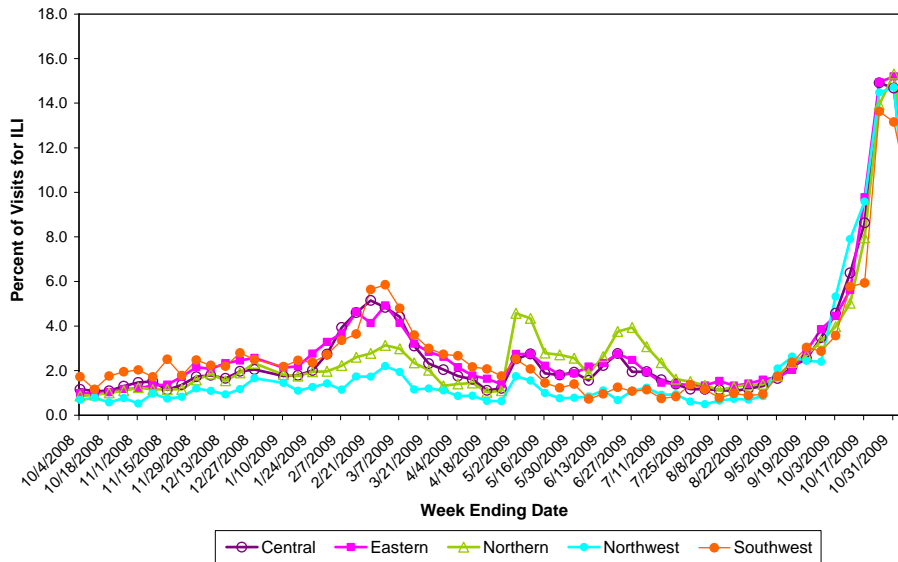


**Novel Influenza A (H1N1) Briefing for JCHC
November 12, 2009
Dr. Karen Remley – State Health Commissioner**

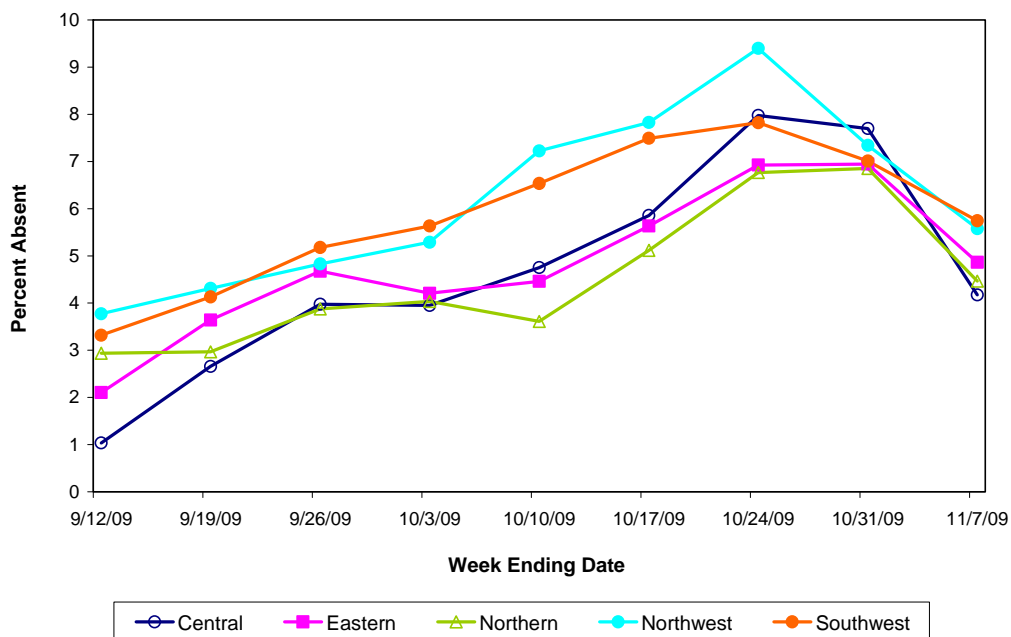
Surveillance



Percent of Emergency Department and Urgent Care Visits for Influenza-like Illness (ILI) by Region, Virginia, 2008-09 and 2009-10 Influenza Seasons



**Average Daily Public School Absenteeism by Region,
Virginia, 2009-10 School Year**



Surveillance Highlights

- The influenza activity level VDH reported to CDC remained at widespread for the eighth week in a row.
- Laboratory findings still show almost exclusively H1N1 influenza circulating.
- Twenty-two confirmed H1N1-associated deaths have been reported to VDH since the beginning of the novel H1N1 influenza pandemic; three occurred in children and eighteen occurred in adults.

General Info

- 453 H1N1 wage positions hired.

Communications

- The H1N1 website continues to be updated. The Commissioner's section (which includes succinct facts on H1N1 in Virginia) has received very positive feedback from users.
- Media interest in novel H1N1 remains high with inquiries at both the local and state level.
- The VDH Inquiry Center calls and emails are down this week, averaging around 350/day. Most inquiries are about children and vaccinations.

Medical Countermeasures / Direct Clinical Care.

- Initiated distribution of adult antiviral meds (Tamiflu and Relenza) to commercial pharmacies to support dispensing to uninsured population. Previously distributed Tamiflu pediatric oral suspension is being dispensed to the public at a rapid pace.
- ~6,000 additional bottles, Tamiflu pediatric oral suspension, has been received from federal Strategic National Stockpile.

- Weekly hospital reporting continues with indication that hospitals continue to be very busy but are managing the additional patients at the moment. Data from report collected on 11/04 reveals:

Bed Category	% Occupied
Adult ICU	73%
Medical/Surgical	80%
Pediatric ICU	86%
Pediatrics	62%
Airborne Infection Isolation	54%

- Facility stress indicators reveal that no facility anticipates staffing shortages or difficulties replenishing general supplies or pharmaceuticals. The following table identifies the extent of other key stress indicators. Total reporting = 83

Vaccination

- Vaccine supply met the CDC projection this week but continues to be inadequate to meet demand.
- Vaccine allocation to providers continues to be adjusted accordingly.
- Continue to focus on CDC priority groups
- Allocation to LHDs based on per cent of total population

Date: 11/10/09	Preservative-free vaccine	Preservative-containing vaccine	Intranasal vaccine (LAIV)	Total
Public providers	17,680	251,790	139,200	408,670
Private providers	73,370	371,610	109,510	554,490
Other providers	100	24,030	8,190	32,320
Total	91,150	647,430	256,900	995,480